

Erratum: Correction of Figure 5-2

This dissertation contains an inadvertent error that graphs in Figure 5-2 are duplicates of Figure 5-1. The corrected Figure 5-2 is presented here. This error does not change the scientific conclusion of the dissertation. The author apologizes for the error.

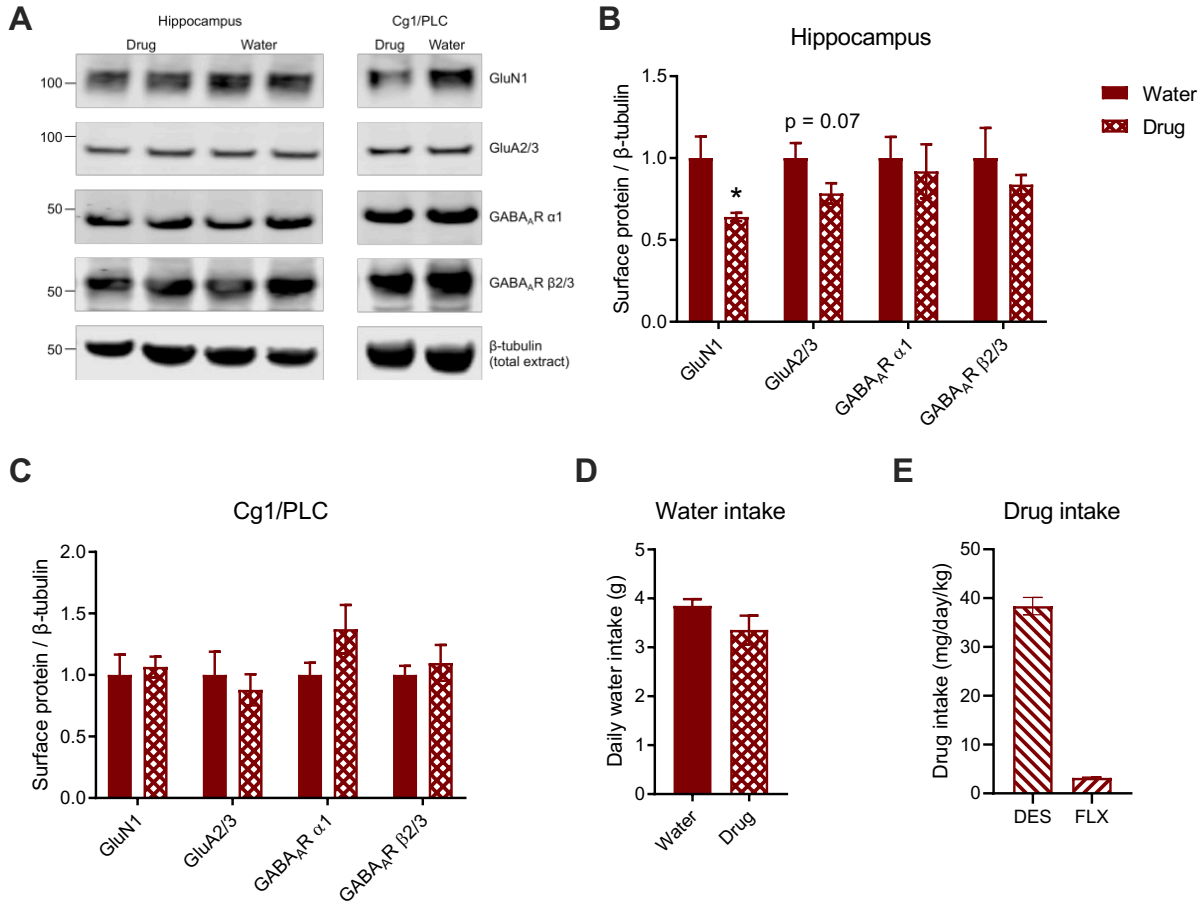


Figure Error! No text of specified style in document.-1: Chronic treatment with desipramine and fluoxetine combined reduces GluRs in the hippocampus in $\gamma 2^{+/-}$ mice.

A) Representative western blots for surface fractions of GluN1, GluA2/3, GABA_AR α1, GABA_AR β2/3 and total fractions of β-tubulin as loading control. **B**, **C**) Surface levels of GluN1 and to a lesser extent GluA2/3 are downregulated in the B) hippocampus (GluN1: $p < 0.05$, GluA2/3: $p = 0.07$, t -tests, $n = 8$) but not changed in C) Cg1/PLC (p , ns , t -tests, $n = 8$). Surface levels of GABA_AR α1 and GABA_AR β2/3 are not changed in the B) hippocampus and C) Cg1/PLC (p , ns , Mann-Whitney tests, $n = 8$). **D**) Water intake of drug groups does not significantly differ from water group (p , ns , Mann-Whitney test, $n = 2$ (animals were group housed thus n represents replicates of experiment)). **E**) Drug intakes were as expected. (measurements: DES: 38.37 ± 2.52 mg/kg/day, FLX: 3.20 ± 0.21 mg/kg/day; expected: DES 29-53 mg/kg/day, FLX 4 mg/kg/day). DES: desipramine, FLX: fluoxetine. Error bars, SEMs, * $p < 0.05$.